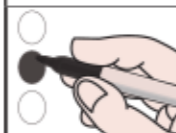


Office	Member of County Committee Ward 2 (Vote for up to three)		
Republican	<input type="radio"/> <small>Republican</small> Lyle R. Milliman	<input type="radio"/> <small>Republican</small> John K. Bromley	<input type="radio"/> <small>Republican</small> Denise E. Travis
Write-In	Write-in	Write-in	Write-in

SAMPLE

Official Ballot for the Primary Election - Republican June 23, 2026

Cattaraugus County
City of Salamanca Ward 2
Kevin C. Burfeson, Commissioner
Cortney L. Spittler, Commissioner



Instructions to voters

- Mark the oval to the left of the name of your choice.
- To vote for a candidate whose name is not printed on the ballot, print the name clearly in the box labeled 'write-in', staying within the box. Any mark or writing outside the spaces provided for voting may void the entire ballot. The number of choices is listed for each contest. Do not mark the ballot for more candidates than allowed. If you do, your vote in that contest will not count.
- To vote on a question or proposal, mark the oval below your choice.
- If you make a mistake, or want to change your vote, ask a poll worker for a new ballot.

Ballot ID :1026