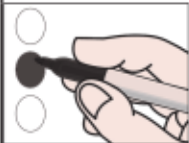


Office	Mayor (Vote for one)	
Republican	<div><div></div><div>Amy B. Sherburne</div></div>	<div><div></div><div>William J. Aiello</div></div>
Write-In		

Official Ballot for the Republican Primary Election
June 24, 2025

Cattaraugus County
City of Olean Ward 1

Kevin C. Burleson, Commissioner
Cortney L. Spittler, Commissioner



Instructions to voters

- Mark the oval to the left of the name of your choice.
- To vote for a candidate whose name is not printed on the ballot print the name clearly in the box labeled 'write-in', staying within the box.
- Any mark or writing outside the spaces provided for voting may void the entire ballot. The number of choices is listed for each contest. Do not mark the ballot for more candidates than allowed. If you do, your vote in that contest will not count. If you make a mistake, or want to change your vote, ask a poll worker for a new ballot.

Ballot ID :1000